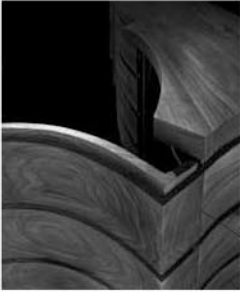


# GIORGIO

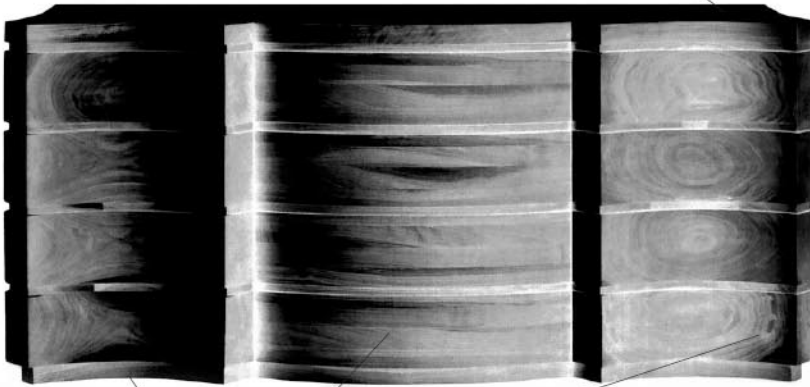


THE DOORS ARE MADE OF A BLOCK OF SOLID WOOD, WHICH IS 55 X 72 AND 9 cm. THICK. THEN THEY ARE EMPTIED WITH THE APPROPRIATE SHAPE.



THE DOORS ARE MITERED SO AS NOT TO NOTICE THE JOINT BETWEEN THE SIDE AND THE DOOR.

THE TOP IS MADE OF SOLID WOOD 5 cm. THICK



THE SIDEBOARD CAN BE TAKEN APART IN FIVE SEPARATE PIECES TO FACILITATE ITS TRANSPORT.

THE GREATEST DIFFICULTY WHEN DOING THIS SIDEBOARD IS TO HIDE ANY TRACE OF DOORS, DRAWERS OR HANDLES. EVERYTHING IS INTEGRATED IN THE SIMPLICITY OF ITS FORMS.

THIS SIDEBOARD IS INSPIRED BY THE WORLD OF NEOCLASSICAL ARCHITECTURE BUT BROUGHT TO THE LAST EXTREME OF SIMPLIFICATION.

