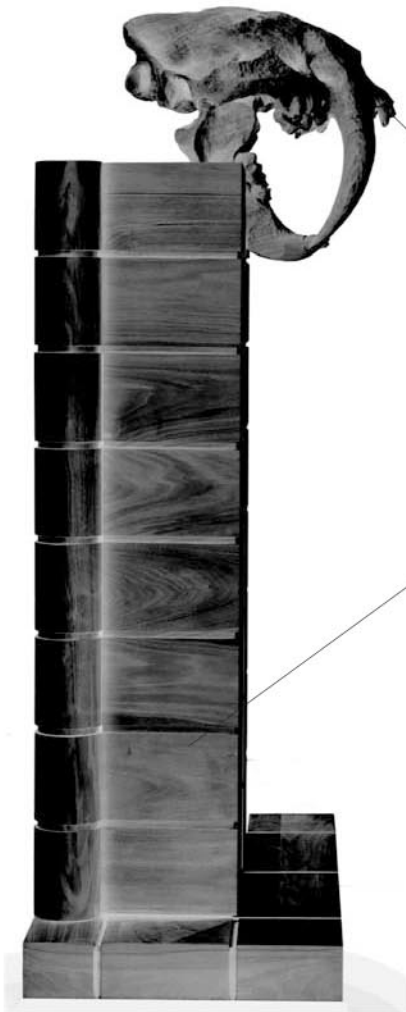


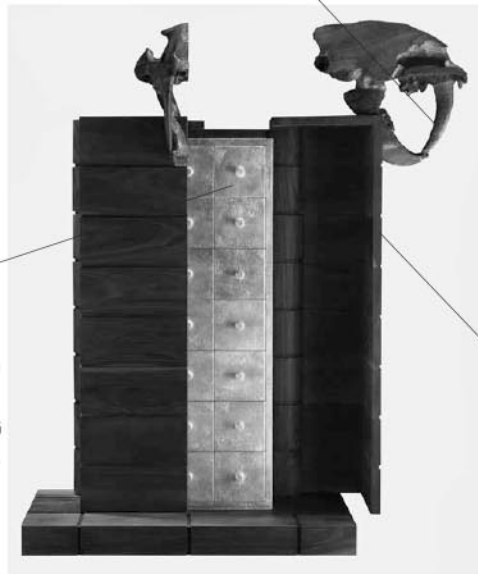
HÉRCULES



WOODEN REPLICA OF A SKULL OF A SMILODON HERCULES, KNOWN AS SABER TOOTH, THE LARGEST FELINE THAT EVER EXISTED ON EARTH.

THE STRIPED SURFACE OF THIS PIECE GIVES IT A CERTAIN ARCHITECTURAL SOLEMNITY.

THE FANGS FUNCTION AS HANDLES TO OPEN AND CLOSE THE DOORS. IN THIS WAY AN ESTHETIC ELEMENT BECOMES KEY TO THE DESIGN PERFORMANCE.



DRAWERS MADE OF "CRUMPLED" GOLD LEAF, A VERY LABORIOUS TECHNIQUE WHICH ACHIEVES A STRIKING EFFECT WHEN WE OPEN THE DOORS.

SOLID WOODEN DOOR 25cm. THICK WITH MITER JOINTS.

THE HANDS OF A CRAFTSMAN ARE ESSENTIAL TO ACHIEVE THE FINISHED SCULPTURE OF THE SKULL.



THE UNION OF THE TOP OF THE DOOR WITH THE HINGE, IS SPECIALLY COMPLEX AS IT HAD TO BE SOLVED BY A MITER BEND, MORE CHARACTERISTIC OF THE WORLD OF ENGINEERING THAN THAT OF THE JOINERY.

WE CONVERTED A DEFECT INTO A VIRTUE WHEN WE USED THESE HUGE WOODEN HINGES. AT FIRST THIS PIECE OF FURNITURE HAD SOME METAL CONVENTIONAL HINGES BUT DUE TO THE WEIGHT OF THE DOOR WE HAD TO LOOK FOR A BETTER SOLUTION WHICH SIGNIFICANTLY IMPROVED THE DESIGN.

